

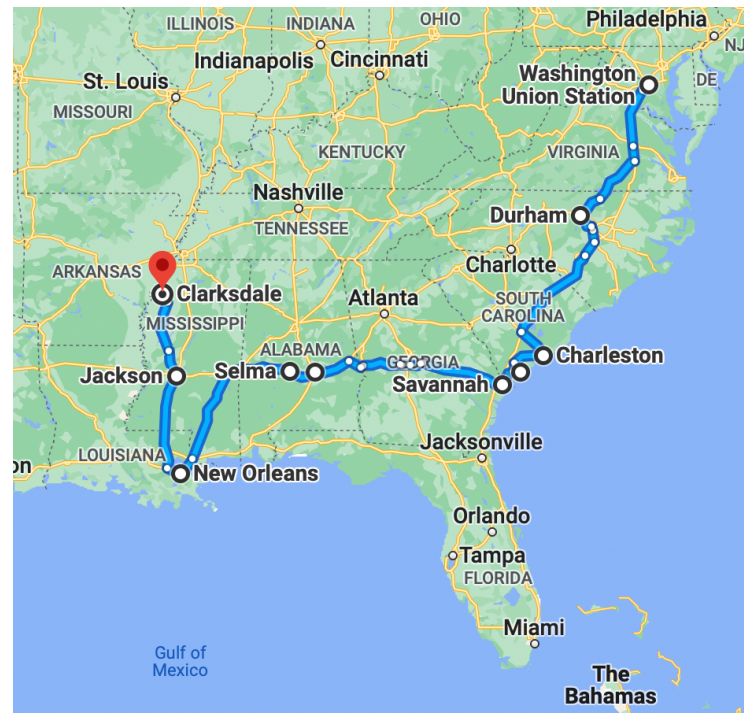


LAURA M. TOWNE

A Northern Unitarian in
South Carolina
1862 - 1900



Meet up outside Union Station



Washington D.C.
Durham NC
Megget SC
Charleston SC
St. Helena Island SC
Savannah GA
Montgomery AL
Selma AL
New Orleans LA
Jackson MS
Clinton MS
Glendora MS
Clarksdale MS





Reconstruction Era
National Historical Park

National Park Service
U.S. Department of the Interior

Dawn of a Revolution: The Penn School



Near the end of the Civil War, classes moved from Brick Baptist Church to this wooden building, which was located at the present day site of the Frisvold Community House. This Reconstruction era school building was taken apart around 1900, and the lumber used to build homes for area residents.



Prior to the Civil War, it was a crime in South Carolina to teach Black people to read. In the Spring of 1862, northern missionaries, most notably Laura Towne, Ellen Murray, and Charlotte Forten, came to St. Helena Island and launched a revolution — they established the Penn School. Here at the Penn Center National Historic Landmark District, you can walk among the trees and buildings where countless lives were changed through education.

Beginning in 1948, Penn School's mission changed, and the site became a civil rights institute focused on community education. One hundred years after the school was established, leaders of the Southern Christian Leadership Conference came to Penn Center to coordinate the growing Civil Rights Movement. Photo from the Penn Center Collections.





angle.

Engraved by CG Childs

FIRST CONGREGATIONAL UNITARIAN CHURCH.

Philad.^a Pub.^d by CG Childs Engraver 185 Chestnut St. Decr. 1829.

Copy right Secured.

Printed by

SOUTH CAROLINA Sea Islands

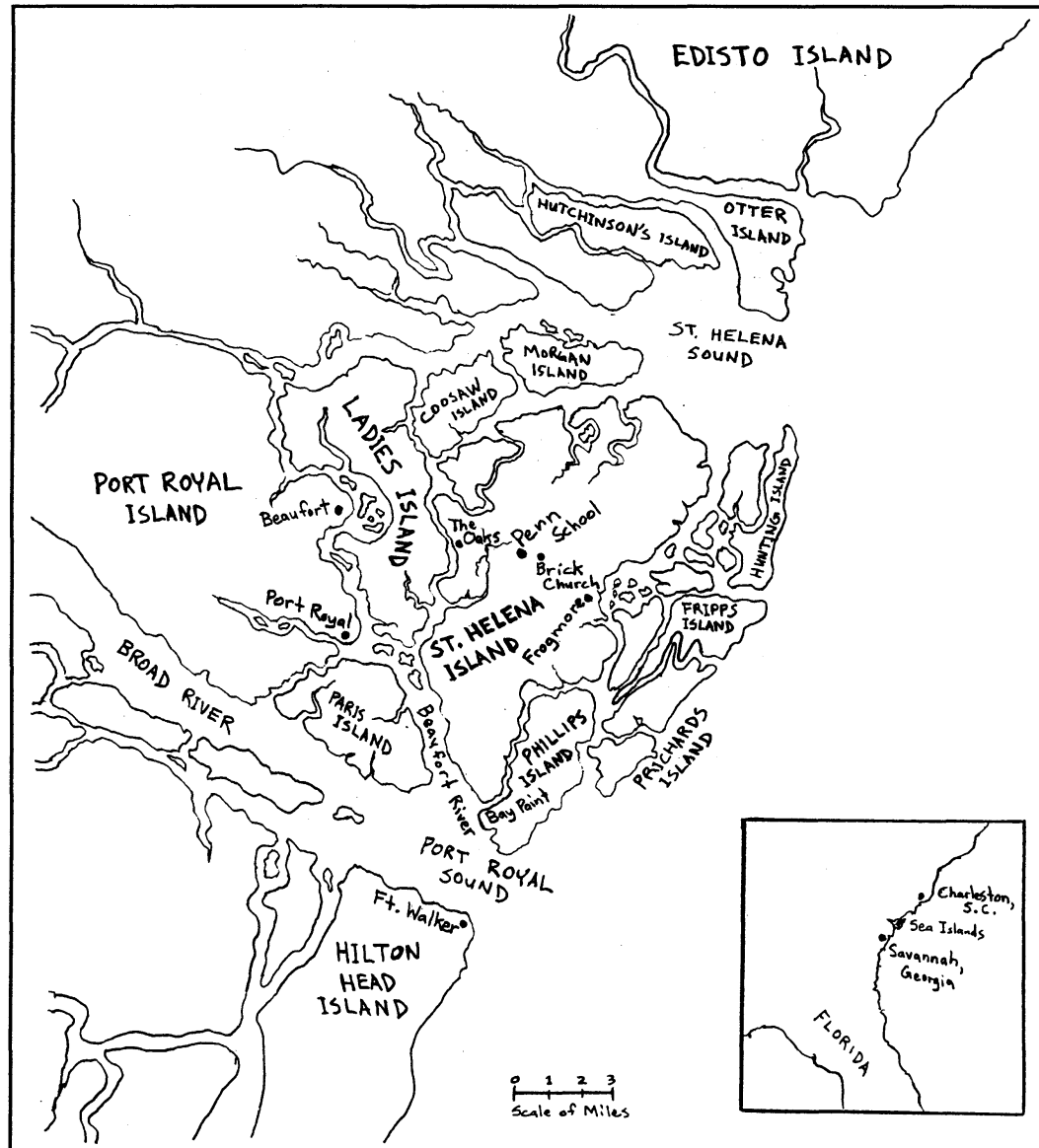
©GraphicMaps.com







ON THE WAY TO SCHOOL





Ellen Murray





Charlotte Forten

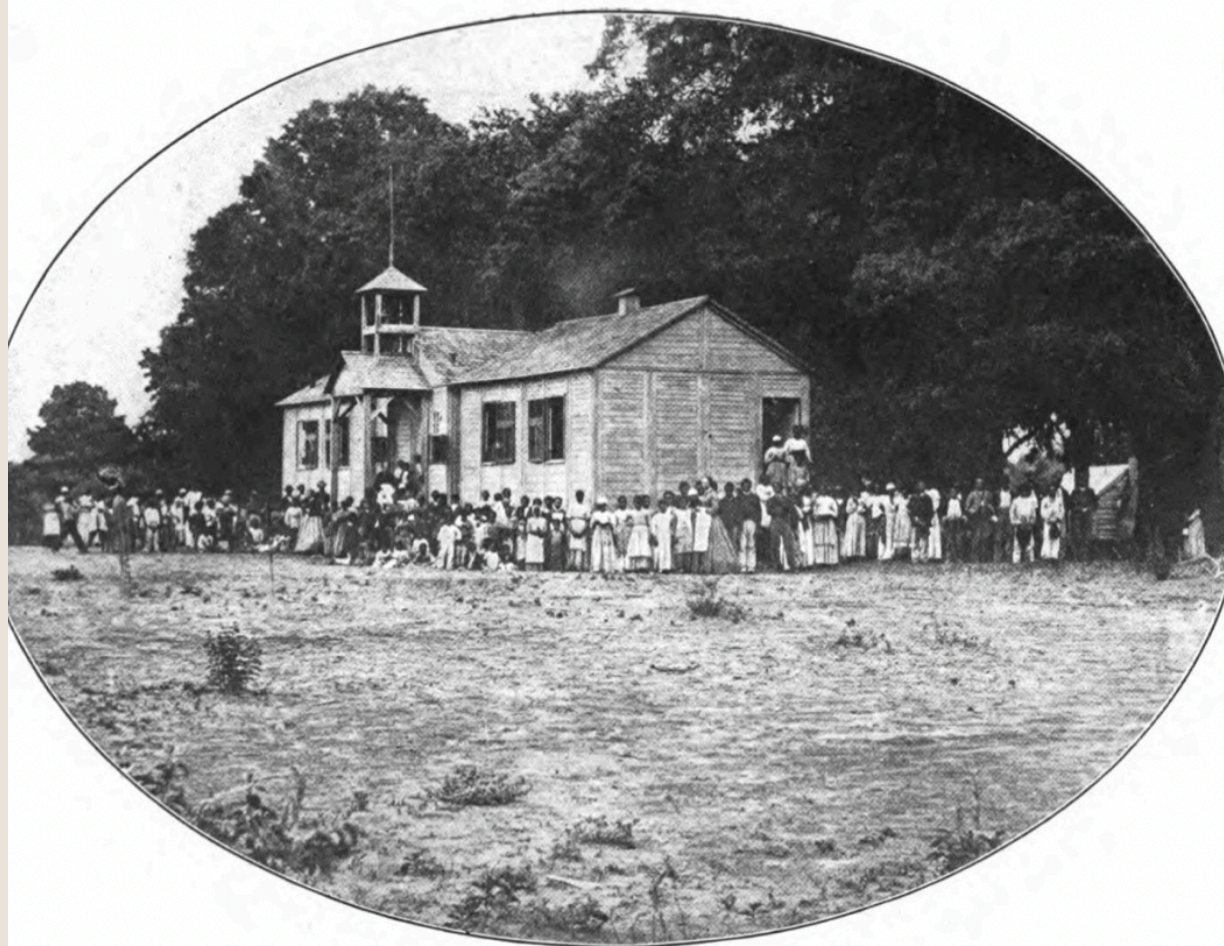


Feb. 1866 - Laura M. Towne
Dick, Maria, Annetta



The First School House for Negroes in the South, 1862.

St. Helena Island, S. C.

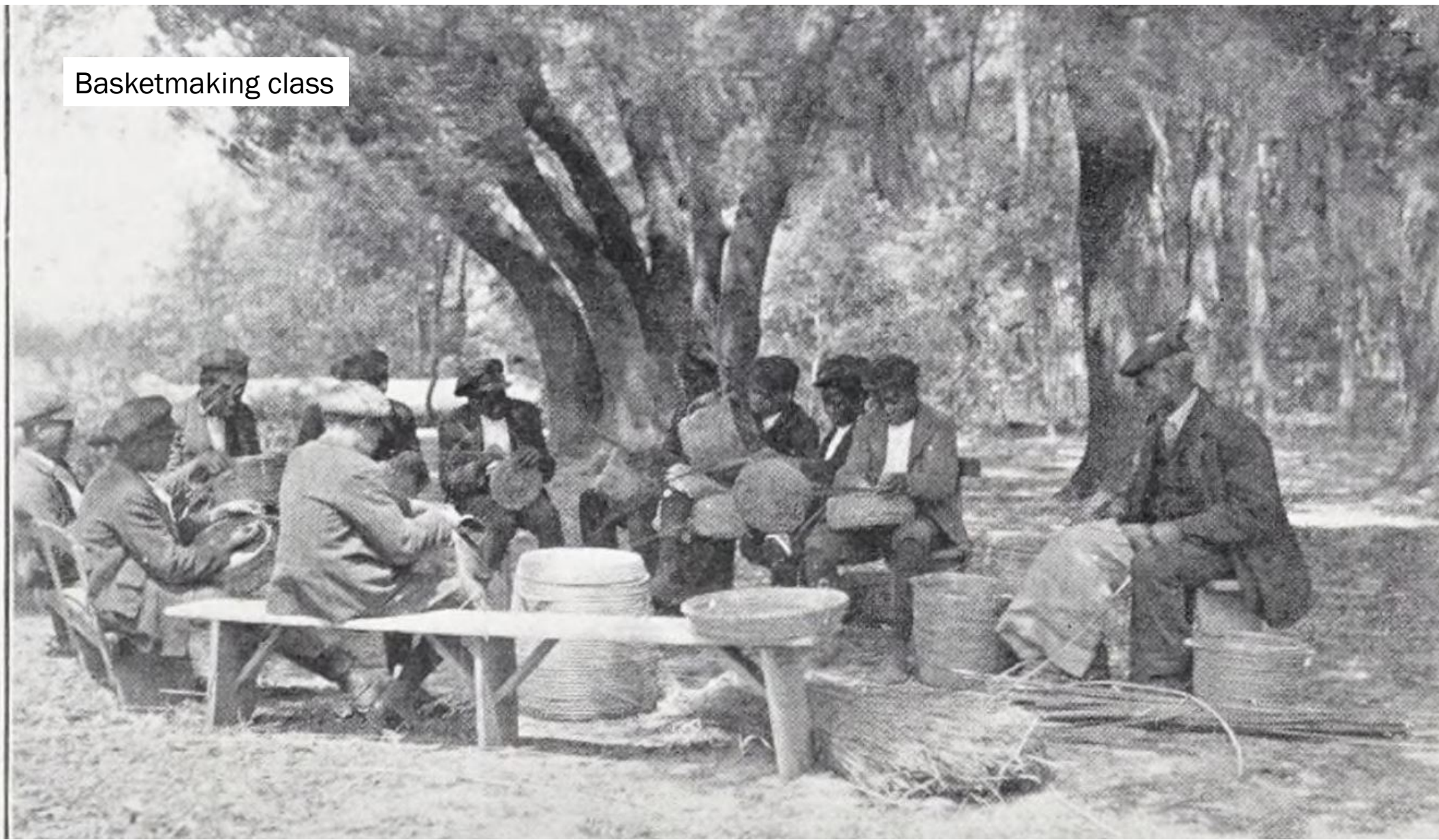


THE PENN SCHOOL, 1886



Sewing class

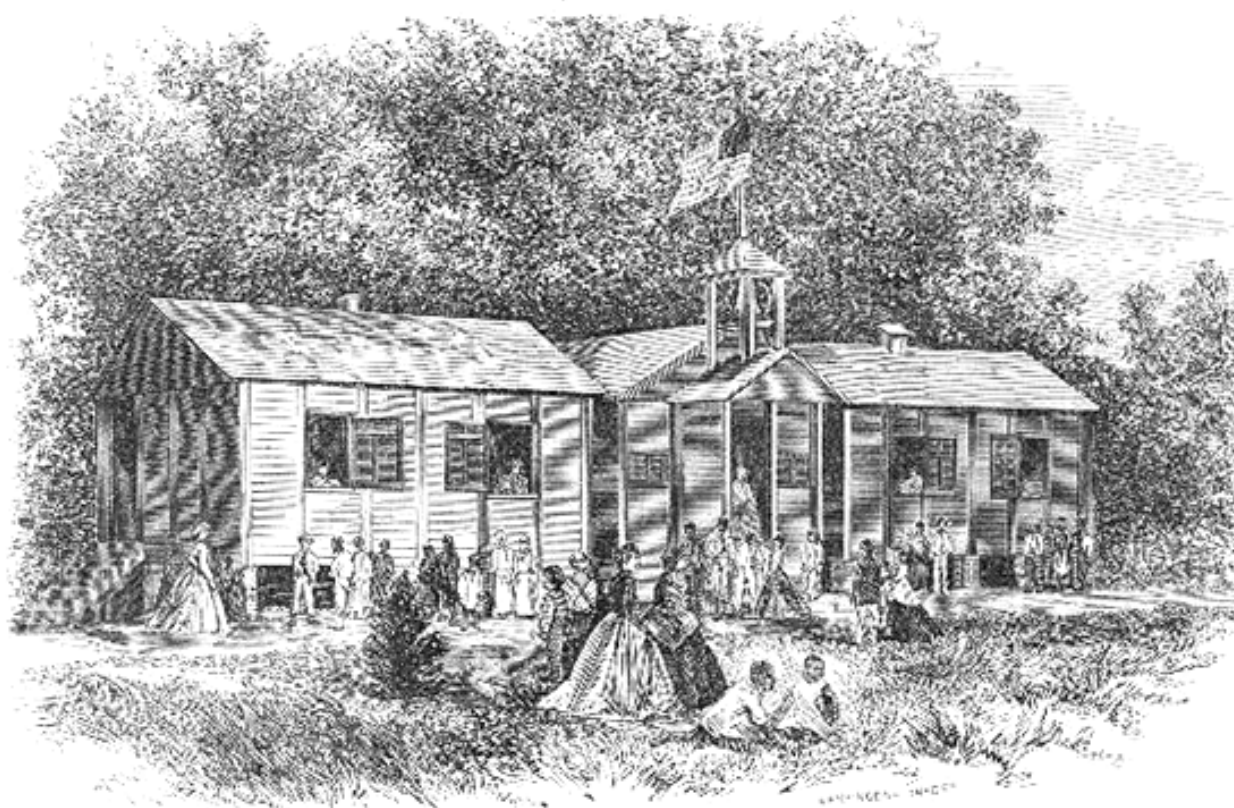
Basketmaking class





History Class





SEA-ISLAND SCHOOL, No. 1.—ST. HELENA ISLAND. ESTABLISHED APRIL, 1862.

TEACHERS { MISS LAURA M. TOWN,
" ELLEN MURRAY,
MR. HARRIS W. ROGERS.

Supported by the Pennsylvania Branch.

EDUCATION AMONG THE FREEDMEN.

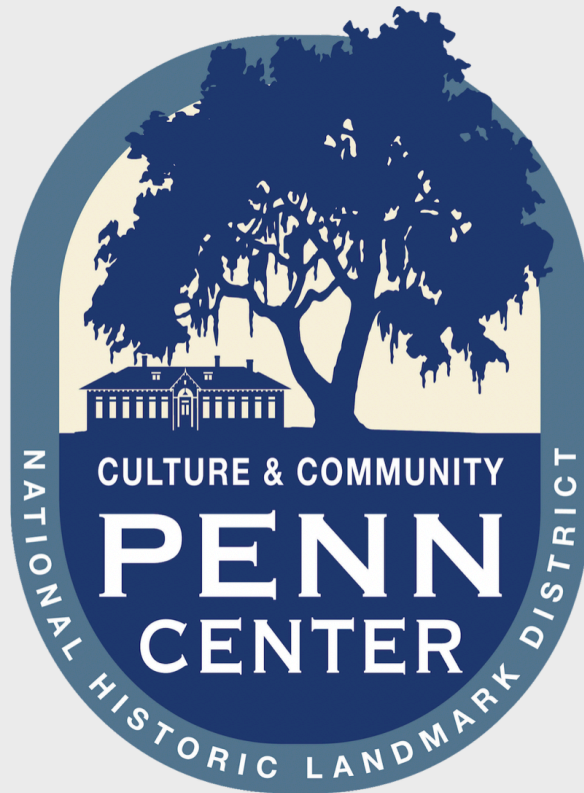
Pennsylvania Branch of the American Freedman's Union Commission.



SOUTH CAROLINA
PENN SCHOOL
One of the first schools for blacks in the South, Penn School, opened in 1862, was reorganized as Penn Normal, Industrial and Agricultural School in 1901. As a result of this change, incorporating principles of education found at both Tuskegee and Hampton Institutes, Penn became an international model. Its program was removed to the Beaufort County school system in 1948.



PENN SCHOOL
ST. HELENA ISLAND, S.C.









Camp Saxton Site

